

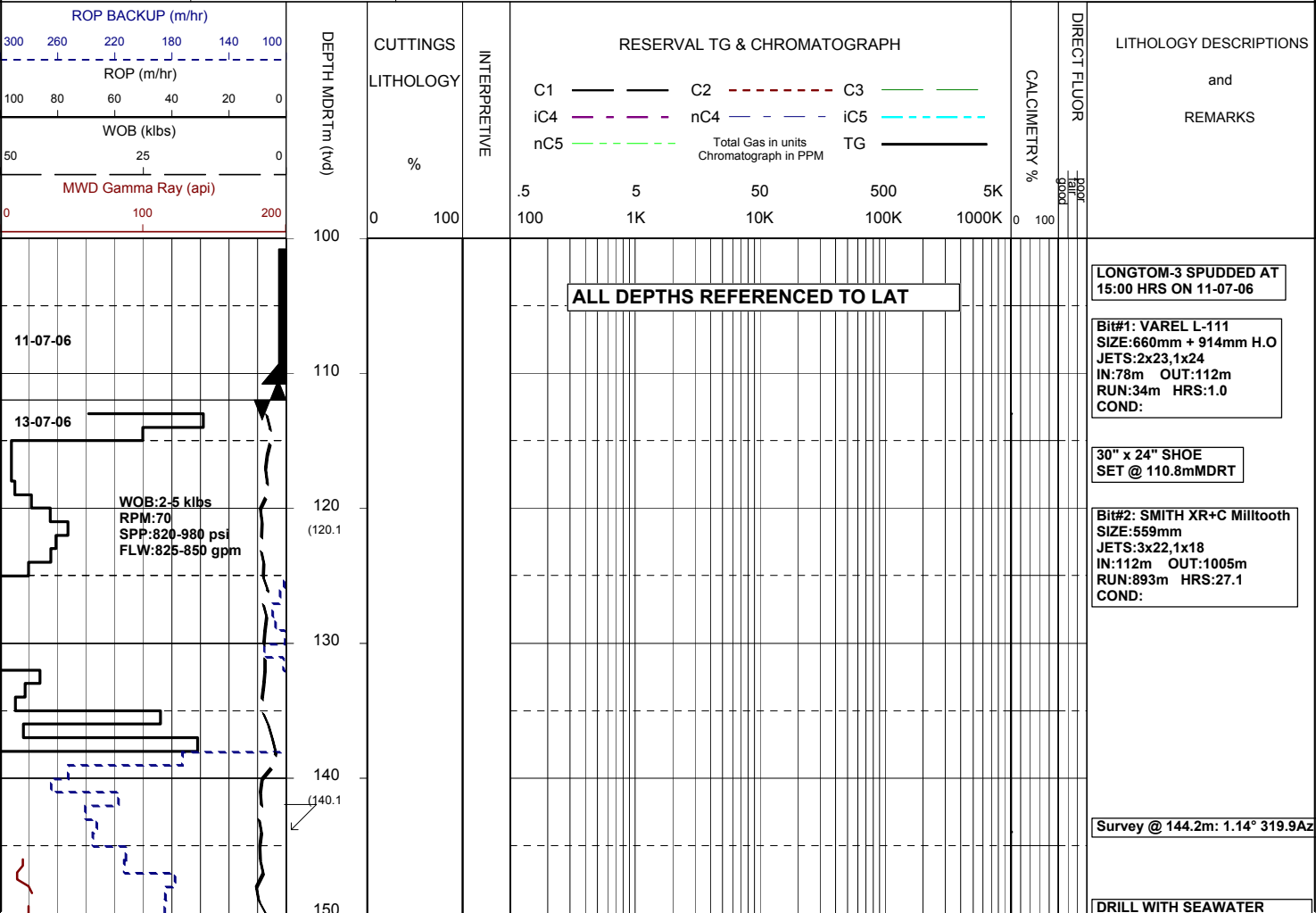


# MASTERLOG LONGTOM-3

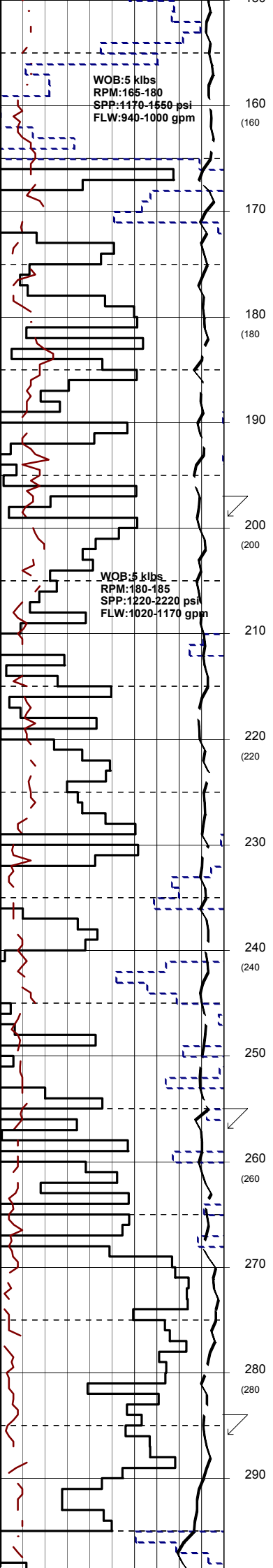


GENERAL	POSITION	HOLE / CASING INFO	DATE / DEPTH	ENGINEERS
Country : AUSTRALIA	Latitude : 38°05'34.774"S	914mm(36") hole to: 112.0m	Spud Date : 11-07-2006	T. N. KYAW
Permit : VIC/P54	Longitude : 148°18'41.479"E	559mm(22") hole to: 1005m	Total Depth Date : XX-09-2006	F. MAKHAD
Field : LONGTOM	UTM Co-ord X (m E): 615005	241mm(9 1/2") hole to: m	Total Depth (mMDRT): m	A. DUNN
Basin : GIPPSLAND	UTM Co-ord Y (m N): 5783055	762mm(30") Cond. to: 110.8m	True Vertical Depth (mTVDSS): m	D. ADDERLEY
Well Type : APPRAISAL	RT to MSL (m): 21.5	406mm(16") Csg. to: 995.3m	Log Scale : 1/ 500	
Rig: OCEAN PATRIOT	RT to Sea Bed (m): 78.2		Final Status : ?	

ABBREVIATIONS		LITHOLOGY LEGEND				ENGINEERING LEGEND	
MW Mud Weight	WOB Weight on Bit (klbs)	Claystone	Marl	Lithic Fragment	Cement	Shoe	DOLOMITE
FV Funnel Viscosity	RPM Rotations Per Min	Siltstone	Clay, Limestone	Foraminifera	Glaucanite	Deviation survey	FIT
PV Plastic Viscosity	FLW Flow Rate (gpm)	Shale	Limestone	Fossils	Pyrite	DST	Mud loss
YP Yield Point	SPP Pump Pressure (psi)	Fine SST	Dolomite	Bryozoa	Iron Minerals	TEST Test	Mud gain
Gel Gel Strength	RR Re-Run Bit	Medium SST	Coal	Sponges	Mica	Sidewall Core	Core
WL Water Loss	TG Trip Gas	Coarse SST	Arg. SST	Brachiopoda	Carb Fragments		
KCl Potassium Chloride	CG Connection Gas						
Cl Chlorides	BG Background Gas						
Incl Inclination	DGP Drilled Gas Peak						
Az Azimuth	MM Mud Motor						



AND HI-VIS SWEEPS  
RETURNS TO THE SEAFLOOR.

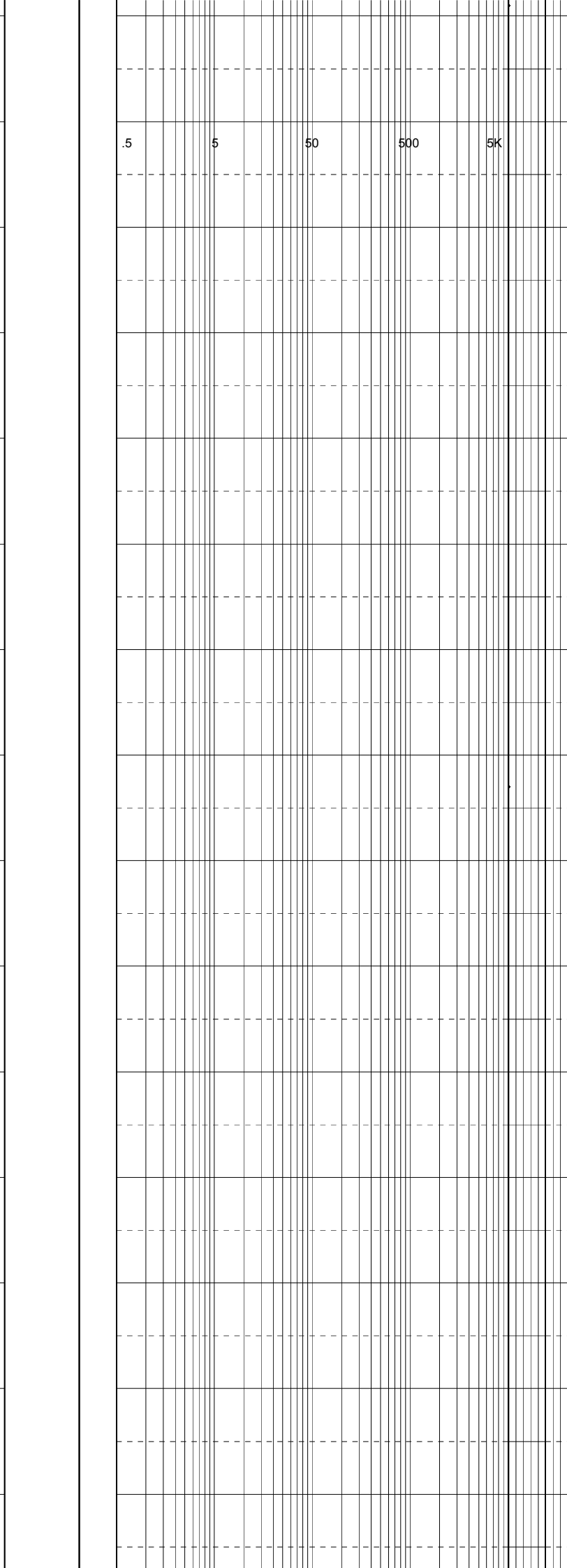
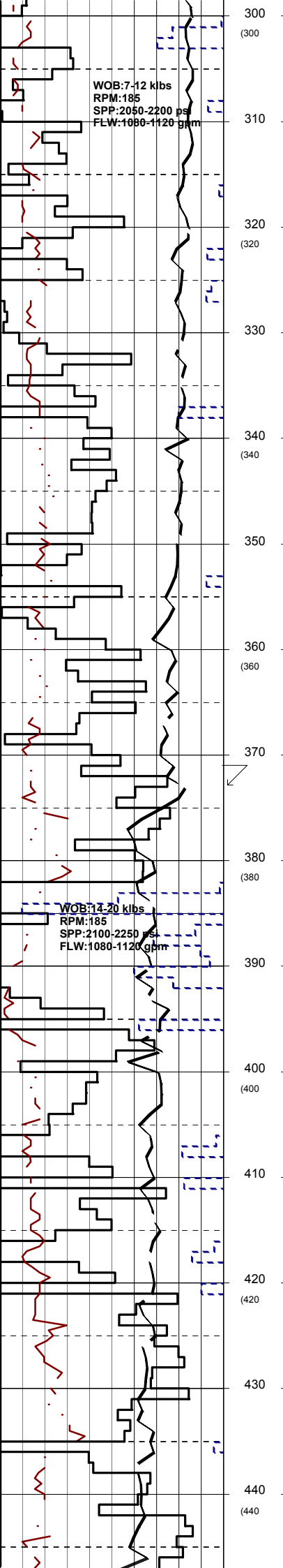


Survey @ 199.1m: 1.01° 317.8Az

DRILL WITH SEAWATER  
AND HI-VIS SWEEPS  
RETURNS TO THE SEAFLOOR.

Survey @ 256.9m: 1.02° 314.1Az

Survey @ 285.5m: 0.77° 322.6Az



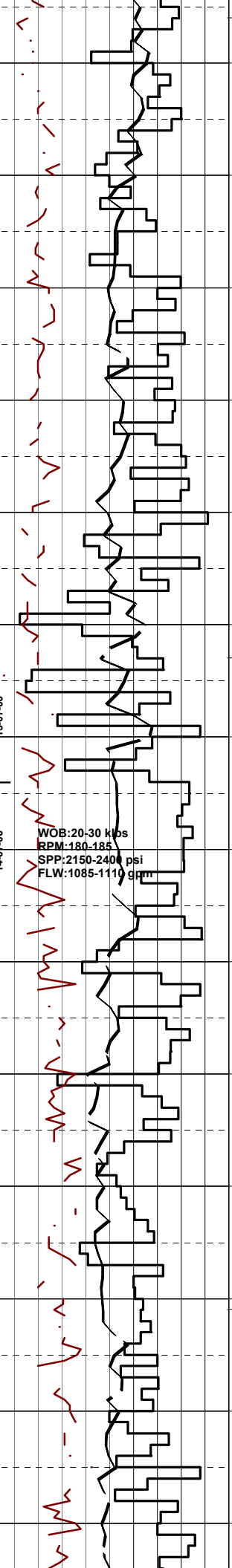
DRILL WITH SEAWATER  
 AND HI-VIS SWEEPS  
 RETURNS TO THE SEAFLOOR.

Survey @ 373.3m: 0.37° 298.4Az

DRILL WITH SEAWATER  
 AND HI-VIS SWEEPS  
 RETURNS TO THE SEAFLOOR.

WOB:17-25 klbs  
RPM:180-185  
SPP:2150-2350 psi  
FLW:1085-1110 gpm

450  
460 (460)  
470  
480 (480)  
490  
500 (500)  
510  
520 (520)  
530  
540 (540)  
550  
560 (560)  
570  
580 (580)  
590



.5 5 50 500 5K

Survey @ 457.6m: 0.63° 340.7Az

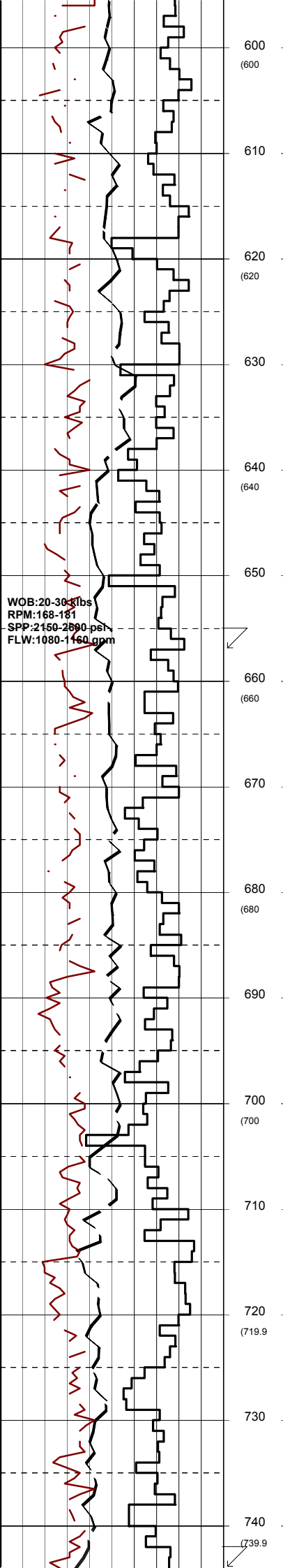
Survey @ 514.7m: 0.25° 238.8Az

13-07-06  
14-07-06

WOB:20-30 klbs  
RPM:180-185  
SPP:2150-2400 psi  
FLW:1085-1110 gpm

DRILL WITH SEAWATER  
AND HI-VIS SWEEPS  
RETURNS TO THE SEAFLOOR.

Survey @ 573.4m: 0.44° 72.2Az



600  
(600)

610

620  
(620)

630

640  
(640)

650

660  
(660)

670

680  
(680)

690

700  
(700)

710

720  
(719.9)

730

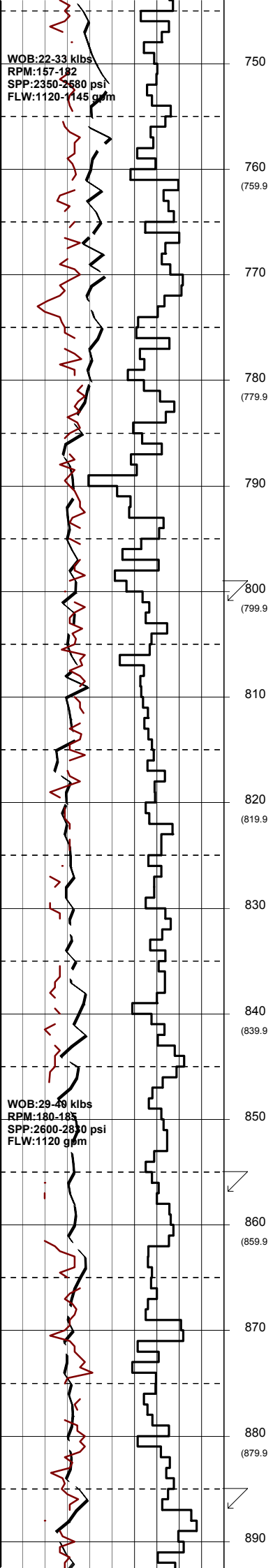
740  
(739.9)

.5      5      50      500      5K

**DRILL WITH SEAWATER  
 AND HI-VIS SWEEPS  
 RETURNS TO THE SEAFLOOR.**

Survey @ 657.5m: 0.63° 5.6Az

Survey @ 744.2m: 1.18° 5.2Az



.5      5      50      500      5K

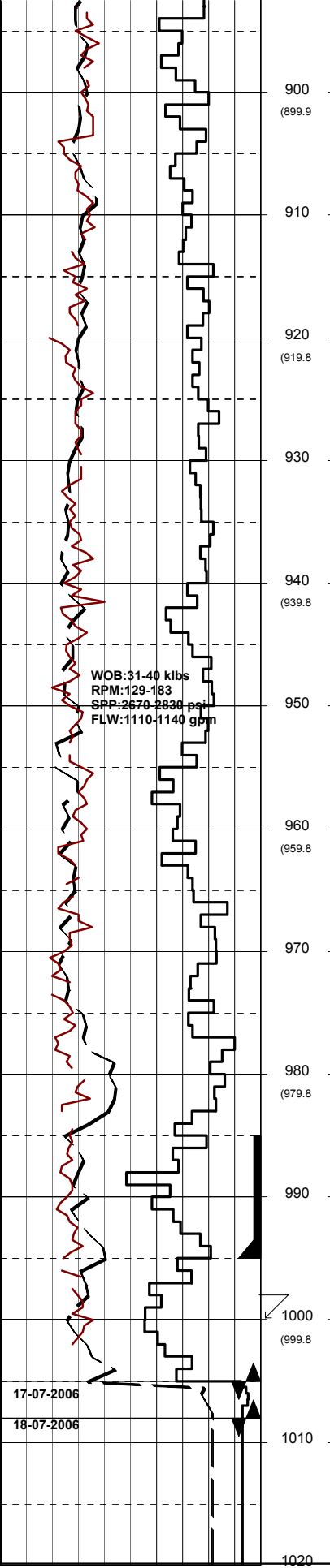
DRILL WITH SEAWATER  
 AND HI-VIS SWEEPS  
 RETURNS TO THE SEAFLOOR.

Survey @ 801.3m: 1.67° 353.9Az

DRILL WITH SEAWATER  
 AND HI-VIS SWEEPS  
 RETURNS TO THE SEAFLOOR.

Survey @ 857.4m: 2.22° 356.6Az

Survey @ 887.0m: 2.27° 356.6Az



900 (899.9)  
 910  
 920 (919.8)  
 930  
 940 (939.8)  
 950  
 960 (959.8)  
 970  
 980 (979.8)  
 990  
 1000 (999.8)  
 1010  
 1020

.5      5      50      500      5K

DRILL WITH SEAWATER  
 AND HI-VIS SWEEPS  
 RETURNS TO THE SEAFLOOR.

16" SHOE  
 SET @ 995.32mMDRT

Survey @ 999.9m: 2.37° 353.4Az

Bit#3: REED Milltooth  
 SIZE: 374mm (14.75")  
 JETS: 3x20  
 IN: 1005m    OUT: 1008m  
 RUN: 3m    HRS: 0.99  
 COND: